

MONTHLY MEMBERSHIP PROGRESS REPORT

District 19 L

Results as of: 5/31/2026

GMT:

LOCATION BRITISH COLUMBIA

GMT CA

Clubs			
RESULTS FOR 2025-2026			
QUARTER	NEW CLUB GOAL	NEW CLUBS	DROPPED CLUBS
JULY/AUG/SEPT	0	0	1
OCT/NOV/DEC	1	0	0
JAN/FEB/MAR	0	0	0
APR/MAY/JUNE	0	0	0

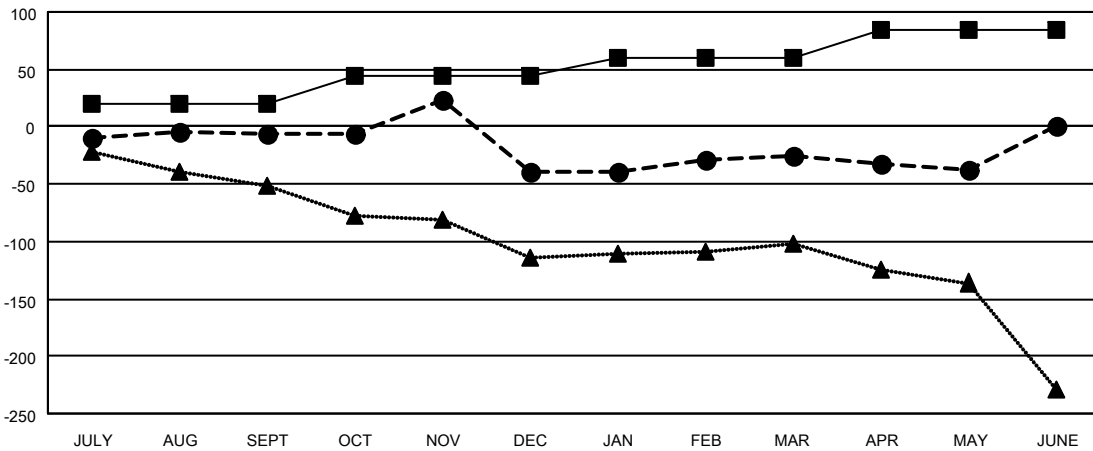
Members			
RESULTS FOR 2025-2026			
QUARTER	MEMBER GROWTH NET GOAL	MEMBER GROWTH ACTUAL	DROPPED MEMBERS ACTUAL (including transfers)
JULY/AUG/SEPT	20	60	50
OCT/NOV/DEC	25	70	90
JAN/FEB/MAR	15	59	39
APR/MAY/JUNE	25	38	37

GOALS AND ACTUAL NEW CLUBS CUMULATIVE



- - CURRENT YEAR GOALS FOR NEW CLUBS
- - CURRENT YEAR ACTUAL NEW CLUBS
- ▲ - LAST YEAR ACTUAL NEW CLUBS

GOALS AND ACTUAL MEMBERS CUMULATIVE



- - MEMBER GROWTH NET GOAL
- - MEMBER GROWTH ACTUAL
- ▲ - LAST YEAR MEMBERSHIP ACTUAL

DROPPED CLUBS: 1	
DROPPED MEMBERS	
DECEASED	21
CLUB CANCELLED	1
OTHER	194
TOTAL	216

56 CLUBS OF 91 ADDED 1 OR MORE NEW MEMBERS

GENDER DISTRIBUTION	
MALE	1,031 (53.12%)
FEMALE	906 (46.68%)

[CLICK HERE FOR CUMULATIVE MEMBERSHIP DATA](#)

TOTAL FAMILY UNIT MEMBERS	257
FAMILY MEMBERS PAYING HALF DUES	130